

MONTHLY MEMBERSHIP PROGRESS REPORT

LOCATION COLORADO

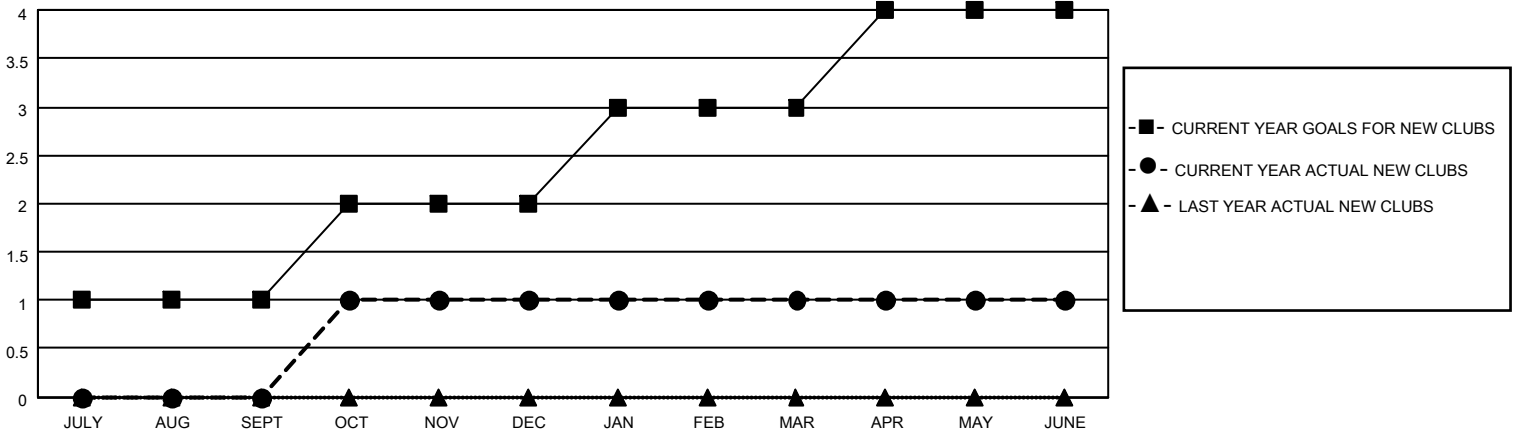
District 6 NE

Results as of: 6/30/2022

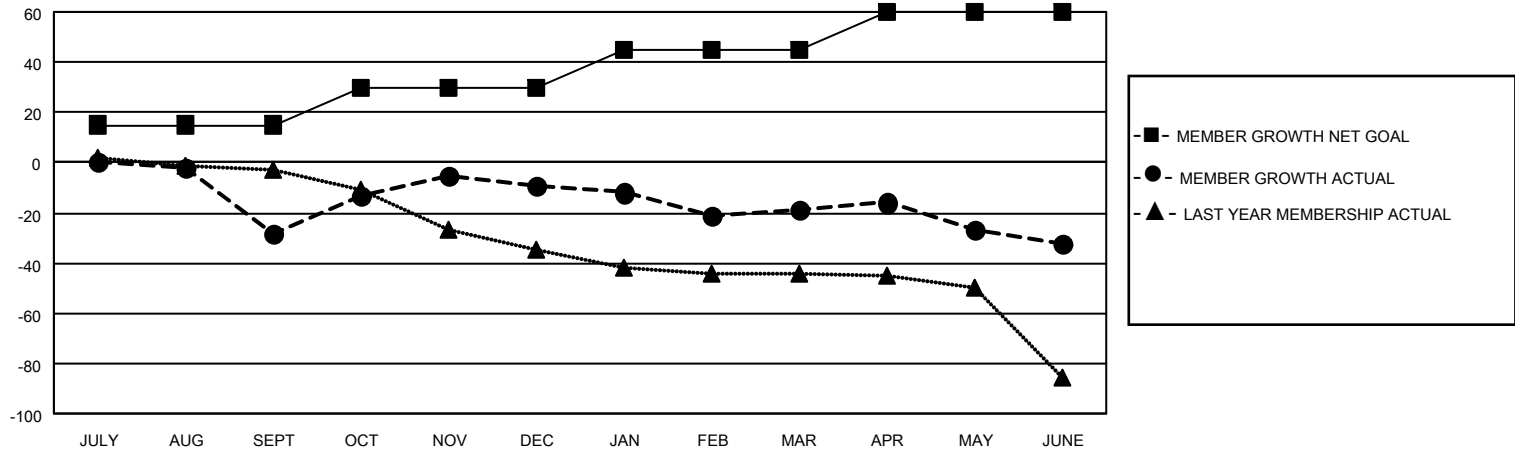
Clubs			
RESULTS FOR 2021-2022			
QUARTER	NEW CLUB GOAL	NEW CLUBS	DROPPED CLUBS
JULY/AUG/SEPT	1	0	6
OCT/NOV/DEC	1	1	1
JAN/FEB/MAR	1	0	0
APR/MAY/JUNE	1	0	0

Members			
RESULTS FOR 2021-2022			
QUARTER	MEMBER GROWTH NET GOAL	MEMBER GROWTH ACTUAL	DROPPED MEMBERS ACTUAL (including transfers)
JULY/AUG/SEPT	15	17	41
OCT/NOV/DEC	15	84	48
JAN/FEB/MAR	15	20	29
APR/MAY/JUNE	15	28	40

GOALS AND ACTUAL NEW CLUBS CUMULATIVE



GOALS AND ACTUAL MEMBERS CUMULATIVE



DROPPED CLUBS: 7	
<u>DROPPED MEMBERS</u>	
DECEASED	16
CLUB CANCELLED	17
OTHER	125
TOTAL	158

19 CLUBS OF 42 ADDED 1 OR MORE NEW MEMBERS

[CLICK HERE FOR CUMULATIVE MEMBERSHIP DATA](#)

<u>GENDER DISTRIBUTION</u>	
MALE	523 (62.71%)
FEMALE	311 (37.29%)
NON BINARY	0 (0.00%)
PREFER NOT TO ANSWER	0 (0.00%)
TOTAL FAMILY UNIT MEMBERS	206
FAMILY MEMBERS PAYING HALF DUES	110